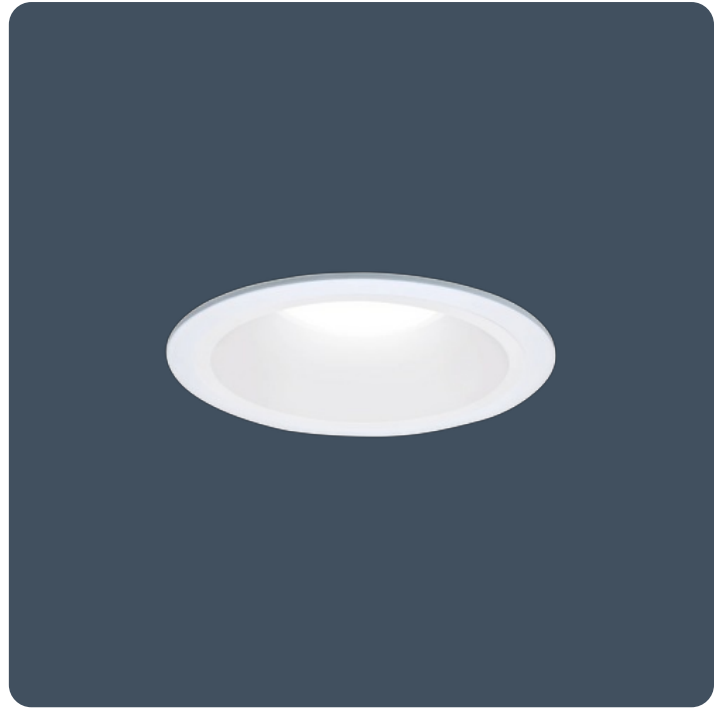


## Non-ferrous circular downlight for use in MRI rooms

Non-ferrous recessed downlighter luminaires for use in magnetic resonance imaging (MRI) rooms. Remote gear box and non-ferrous downlighter head designed specifically to meet the requirements of MRI rooms. Non-maintained emergency version also available.

Applications: MRI rooms.

- Non-ferrous construction, designed for use in MRI rooms
- Two output circuits per DALI gearbox where each circuit can power a minimum of 5 downlighter heads, up to a maximum of 8
- Downlighter wiring configured for low EMI when used with EMI filters (supplied by others)
- Emergency status indicator LED can be remotely mounted outside of the room
- DALI dimmable control gear as standard. Can be used with push to make retractable switch for dimming and switching



IP20

133.3 LL/CW

### Specification

IP rating **IP20**

### Lighting

Lumen output **1,600 lm**      Efficacy **133.3 LL/CW**

### Emergency data

Emergency lumen output **800 lm**      Emergency type **Non-maintained**  
 Emergency duration **3 hours**      Battery specification **Nickel Metal Hydride (NiMH)**

### Power

LED power **6 W - 11 W**      Circuit power **12 W**

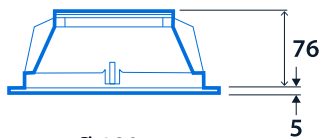
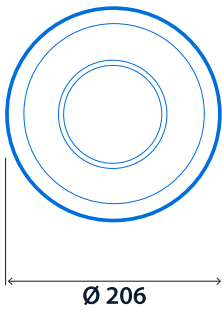
### LED characteristics

CRI **80+**      Colour temperature **4000 K**  
 Rated life (hours) **100 K - L80/B10**

### Compliance

UKCA **Yes**      CE **Yes**

## Dimensions

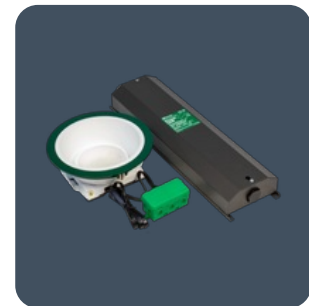
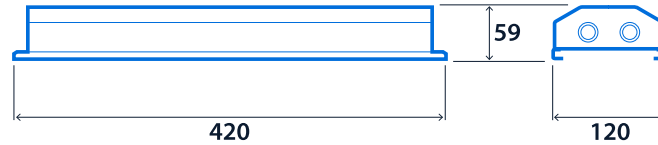


Cut-out -  $\varnothing$  180  
Minimum void depth - 110

### LED Downlighter Power Unit



### Emergency LED Downlighter Power Unit



[Click or scan here](#)  
View G3 MRI variants using our  
online filtering tool



Information is correct as of 29-Dec-2024, however must not be interpreted as a guarantee of individual product performance and/or characteristics. We reserve the right to alter specifications and designs without prior notice.